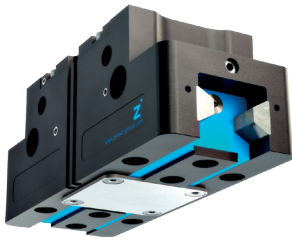


2-JAW PARALLEL GRIPPERS

INSTALLATION SIZE GPP5045

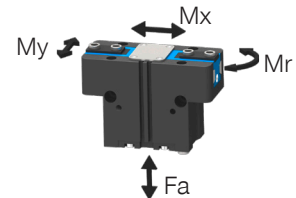
COMING
SOON

▶ PRODUCT SPECIFICATIONS



▶ Forces and moments

Displays static forces and moments that can also have an effect, besides the gripping force.



Mr [Nm]	390
Mx [Nm]	580
My [Nm]	600
Fa [N]	11500

▶ TECHNICAL DATA

Order no.	▶ Technical Data*					
	GPP5045N-00-A	GPP5045NC-00-A	GPP5045NO-00-A	GPP5045S-00-A	GPP5045SC-00-A	GPP5045SO-00-A
Stroke per jaw [mm]	45	45	45	26	26	26
Gripping force in closing [N]	10200	13700		19400	26050	
Gripping force in opening [N]	10700		14200	20300		26950
Gripping force secured by spring min. [N]		3500	3500		6650	6650
Closing time [s]	0.55	0.45	0.7	0.55	0.45	0.7
Opening time [s]	0.55	0.7	0.45	0.55	0.7	0.45
Permissible weight per jaw max [kg]	17	17	17	17	17	17
Length of the gripper fingers max. [mm]	400	350	350	350	300	300
Repetition accuracy +/- [mm]	0.05	0.05	0.05	0.05	0.05	0.05
Operating pressure min. [bar]	3	4	4	3	4	4
Operating pressure max. [bar]	8	6.5	6.5	8	6.5	6.5
Operating temperature [°C]	-10 ... +90	-10 ... +90	-10 ... +90	-10 ... +90	-10 ... +90	-10 ... +90
Air volume per cycle [cm ³]	2420	4400	4400	2420	4400	4400
Protection to IEC 60529	IP64	IP64	IP64	IP64	IP64	IP64
Weight [kg]	33	40.5	40.5	34	41.5	41.5

Order no.	▶ Technical Data - High Temperature Version					
	GPP5045N-20-A	GPP5045NC-20-A	GPP5045NO-20-A	GPP5045S-20-A	GPP5045SC-20-A	GPP5045SO-20-A
Operating temperature [°C]	-10 ... +130	-10 ... +130	-10 ... +130	-10 ... +130	-10 ... +130	-10 ... +130

Order no.	▶ Technical Data - Protector Version					
	GPP5045N-21-A	GPP5045NC-21-A	GPP5045NO-21-A	GPP5045S-21-A	GPP5045SC-21-A	GPP5045SO-21-A
Protection to IEC 60529	IP67**	IP67**	IP67**	IP67**	IP67**	IP67**
Weight [kg]	41.5	49	49	42.5	50	50

Order no.	▶ Technical Data - High Temperature Protector Version					
	GPP5045N-24-A	GPP5045NC-24-A	GPP5045NO-24-A	GPP5045S-24-A	GPP5045SC-24-A	GPP5045SO-24-A
Operating temperature [°C]	-10 ... +130	-10 ... +130	-10 ... +130	-10 ... +130	-10 ... +130	-10 ... +130
Protection to IEC 60529	IP67**	IP67**	IP67**	IP67**	IP67**	IP67**
Weight [kg]	41.5	49	49	42.5	50	50

*All data measured at 6 bar

** with purged air (max. 0,5 bar)