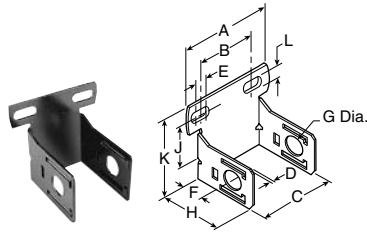




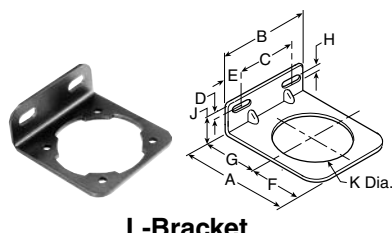
Accessories and Repair Kits

08 Series
12 Series
18 / 28 Series
39 Series

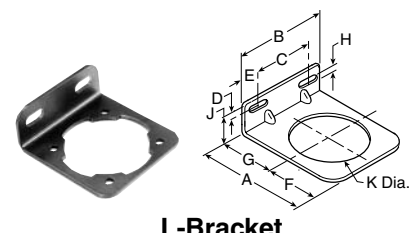
Accessories – Filters



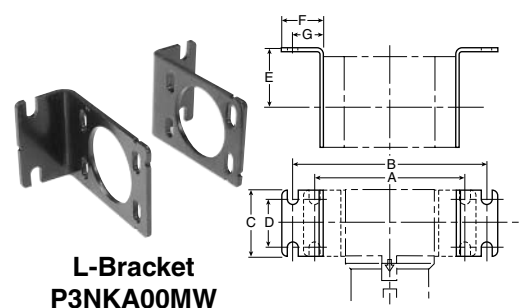
C-Bracket
GPA-97-010



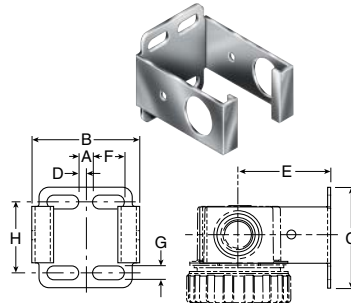
L-Bracket
GPA-96-604



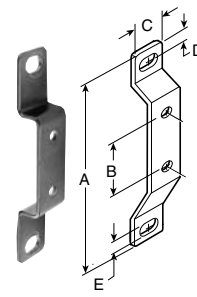
L-Bracket
GPA-96-605



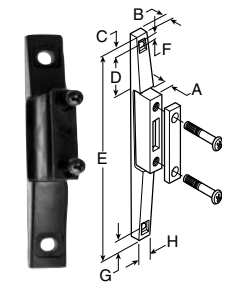
L-Bracket
P3NKA00MW



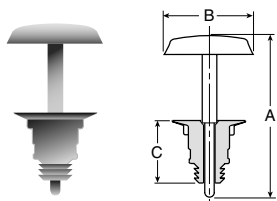
Wall Bracket
GPA-96-300



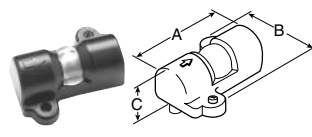
T-Bracket
GPA-96-602



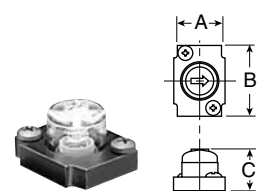
T-Bracket
GPA-96-737
w/ Joiner



Automatic Piston Drain
GRP-96-716



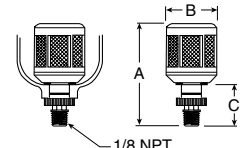
Differential Pressure Indicator
DP8-01-000



Differential Pressure Indicator
FRP-96-300



Automatic Mechanical Drain
GRP-95-973, -981, GRP-96-200, -300



Dimensions Inches (mm)

Accessories	Part Number	Used On	A	B	C	D	E	F	G	H	J	K	L
Automatic Piston Drain	GRP-96-716	F08, M08, B08	1.70 (43)	.94 (24)	.68 (17)	—	—	—	—	—	—	—	—
C-Bracket	GPA-97-010	F08, M08, B08	2.67 (68)	1.73 (44)	1.57 (40)	.07 (1.8)	.39 (9.9)	1.57 (40)	.78 (20)	2.32 (59)	1.37 (35)	2.41 (61)	.26 (6.6)
Wall Bracket	GPA-96-300	F12, M12	.28 (7)	2.12 (54)	2.00 (51)	.14 (4)	1.85 (47)	.63 (16)	.28 (7)	—	—	—	—
L-Bracket	GPA-96-604	F18, M18, B18	2.84 (72)	2.74 (69.5)	1.66 (42)	.38 (9.6)	.54 (14)	.88 (22)	1.57 (40)	.28 (7.1)	1.10 (28)	2.25 (57)	—
L-Bracket	GPA-96-605	F28, M28, B28	3.44 (87)	3.00 (76)	1.88 (48)	.38 (9.6)	.56 (14)	1.10 (28)	1.94 (49)	.28 (7.1)	1.10 (28)	2.66 (67.5)	—
L-Bracket	P3NKA00MW	F39, B39	6.22 (158)	8.19 (208)	2.75 (70)	1.97 (50)	2.36 (60)	1.77 (45)	1.30 (33)	—	—	—	—
T-Bracket	GPA-96-602	F18, F28, M18, M28	3.75 (95)	1.25 (32)	.76 (19.3)	.25 (6.3)	.28 (7.1)	—	—	—	—	—	—
T-Bracket w/ Joiner	GPA-96-737	F08, M08	.45 (11)	.28 (7.1)	.40 (10)	.67 (17)	3.97 (100.8)	.22 (5.6)	.40 (10)	.64 (16)	—	—	—
Differential Pressure Indicator	DP8-01-000	F18, F28, M18, M28	2.12 (54)	1.85 (47)	.84 (21)	—	—	—	—	—	—	—	—
	FRP-96-300	F12, M12	1.25 (31.8)	1.50 (38.1)	.94 (23.8)	—	—	—	—	—	—	—	—
Automatic Mechanical Drains													
Nitrile 1/8 NPT	GRP-95-973	18/28 F, M, B											
Fluorocarbon 1/8 NPT	GRP-95-981	18/28 F, M, B	2.93 (74.4)	1.47 (37.3)	1.17 (29.7)	—	—	—	—	—	—	—	—
Nitrile 1/8 BSP, R1/8	GRP-96-200	18/28 F, M, B											
Fluorocarbon 1/8 BSP, R1/8	GRP-96-300	18/28 F, M, B											

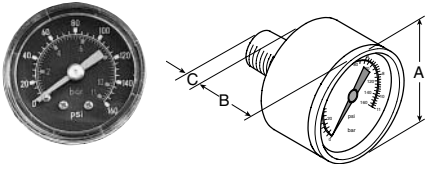
Filter Replacement Repair Kits

 = "Most Popular"

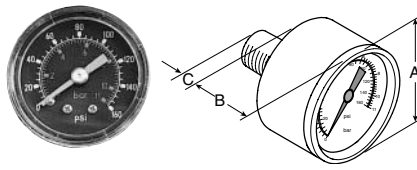


Model	Plastic Bowl / Bowl Guard Manual Drain	Metal Bowl / Sight Gauge Manual Drain	Plastic Bowl / Bowl Guard Automatic Drain	Metal Bowl / Sight Gauge Automatic Drain	Plastic Bowl / Bowl Guard No Drain	
Particulate Filter						
F08	GRP-96-712	GRP-96-714*	N/A	N/A	N/A	
F12	GRP-96-347 w/ GRP-96-345	GRP-96-349	GRP-96-351** w/ GRP-96-345	GRP-96-352**	N/A	
F18	GRP-96-634	GRP-96-636	GRP-96-635	GRP-96-637	GRP-96-638	
F28	GRP-96-642	GRP-96-644	GRP-96-643	GRP-96-645	GRP-96-652	
F39	N/A	P3NKA00BSM	N/A	P3NKA00BSA	N/A	
* Metal bowl does not have sight gauge. ** 12 Series has Piston Style Drain.						
Coalescing						
M08	GRP-96-712	GRP-96-714*	N/A	N/A	N/A	
M12	GRP-96-347 w/ GRP-96-345	GRP-96-349	GRP-96-351** w/ GRP-96-345	GRP-96-352**	N/A	
M18	GRP-96-634	GRP-96-636	GRP-96-635	GRP-96-637	GRP-96-638	
M28	GRP-96-642	GRP-96-644	GRP-96-643	GRP-96-645	GRP-96-652	
M39	N/A	P3NKA00BSM	N/A	P3NKA00BSA	N/A	
* Metal bowl does not have sight gauge. ** 12 Series has Piston Style Drain.						
Model	Type A Filter Element 5 Micron	Bowl O-ring (Nitrile)	Bowl O-ring (Fluorocarbon)	Filter Retainer Element Baffle	Manual Drain	Manual Override Drain
Particulate Filter						
F08	FRP-96-729	GRP-96-710	GRP-96-711	N/A	N/A	N/A
F12	GRP-96-344	N/A	N/A	N/A	GRP-96-340	N/A
F18	FRP-96-639	GRP-96-640	GRP-96-754	FRP-96-641	GRP-96-685	GRP-96-000
F28	FRP-96-653	GRP-96-654	GRP-96-755	FRP-96-283	GRP-96-685	GRP-96-000
F39	P3NKA00ESE	N/A	N/A	N/A	PS512	N/A
Coalescing						
M08	N/A	GRP-96-710	GRP-96-711	N/A	N/A	N/A
M12	N/A	N/A	N/A	N/A	GRP-96-340	N/A
M18	N/A	GRP-96-640	GRP-96-754	N/A	GRP-96-685	GRP-96-000
M28	N/A	GRP-96-654	GRP-96-755	N/A	GRP-96-685	GRP-96-000
M38	N/A	N/A	N/A	N/A	PS-512	N/A
Model	Type-B Coalescing Element 0.5 Micron	Type C Coalescing Element 0.01 Micron		Type D Adsorption Element Activated Carbon		
M08	MSP-96-732	MTP-96-649		MXP-96-222		
M12	MRP-96-301	MRP-96-300		N/A		
M18	MSP-96-647	MTP-96-646		MXP-96-650		
M28	MSP-96-649	MTP-96-648		MXP-96-651		
M39	P3NKA00ES9	P3NKA00ESC		N/A		

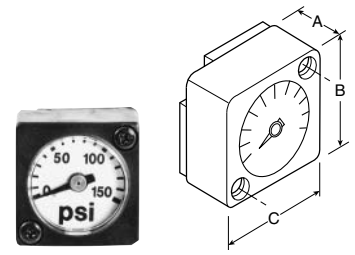
Accessories – Regulators



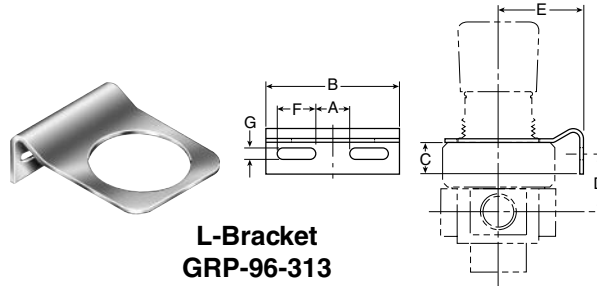
**Gauge with 1/4 Port
18 / 28 Series**



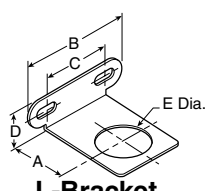
**Gauge with 1/8 Port
08 Series**



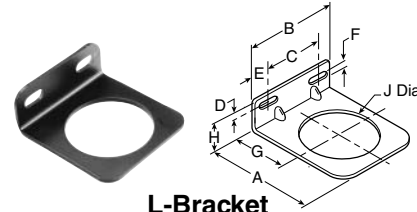
**Flush Mount Gauge
08 Series**



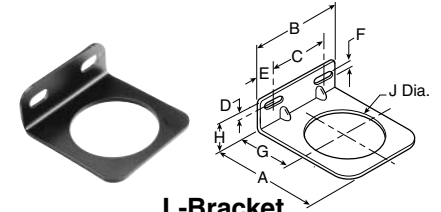
**L-Bracket
GRP-96-313**



**L-Bracket
GRP-96-739**



**L-Bracket
GRP-96-606**



**L-Bracket
GRP-96-607**

Dimensions Inches (mm)

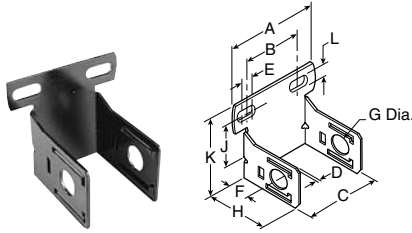
Accessories	Part Number	Used On	A	B	C	D	E	F	G	H	J
L-Bracket	GRP-96-739	R08, R09	1.57 (40)	2.68 (68)	1.74 (44)	.97 (25)	1.19 (30)	—	—	—	—
	GRP-96-313	R12	.84 (21)	2.59 (66)	.49 (12)	1.02 (26)	1.85 (47)	.61 (15)	.28 (7)	1.41 (36)	—
	GPA-96-606	R18, R19	2.74 (69.5)	2.74 (69.5)	1.66 (42)	.43 (11)	.54 (14)	.28 (7.1)	1.57 (40)	1.00 (25)	2.0 (51)
	GPA-96-607	R28	3.33 (84.5)	3.00 (76)	1.88 (48)	.43 (11)	.56 (14)	2.40 (61)	1.94 (49)	1.00 (25)	2.40 (61)
18 / 28 Gauge, 1/4 Port, CBM											
(0 to 30 PSIG)	RRP-96-663	R12, R18, R28									
(0 to 60 PSIG)	RRP-96-664	R12, R18, R28									
(0 to 160 PSIG)	RRP-96-665	R12, R18, R28									
(0 to 300 PSIG)	RRP-96-666	R12, R18, R28	1.59 (40)	.96 (24)	.88 (22)	—	—	—	—	—	—
(0 to 2,0 bar)	RRP-96-667	R18, R28									
(0 to 4,2 bar)	RRP-96-668	R18, R28									
(0 to 11 bar)	RRP-96-669	R18, R28									
(0 to 20 bar)	RRP-96-670	R18, R28									
08 Gauge, 1/8 Port, CBM											
(0 to 160 PSIG)	GRP-95-227	R08	1.59 (40)	.98 (24)	.88 (22)	—	—	—	—	—	—
(0 to 11 bar)											
(0 to 60 PSIG)	GRP-95-228	R08									
(0 to 4,1 bar)											
Flush Mount Gauge											
(0 to 150 PSIG)	GRP-96-719	R08	—	—	—	—	—	—	—	—	—
(0 to 60 PSIG)	GRP-96-720	R08									
(0 to 11 bar)	GRP-96-722	R08									
(0 to 4 bar)	GRP-96-723	R08									

Regulator Replacement Kits

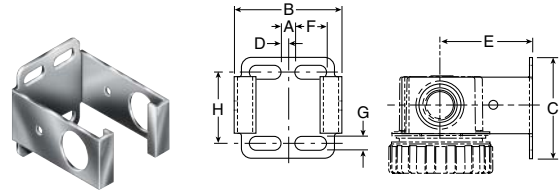
 = "Most Popular"

Model	Self-relieving Diaphragm (Nitrile)	Non-relieving Diaphragm (Nitrile)	Valve Assembly Kit	Tamper Resistant Ring	Plastic Panel Nut	Aluminum Panel Nut
Regulators						
R08, R09	GRP-96-725	GRP-96-726	RRP-96-727	RPA-96-735	RPA-96-734	RPA-96-733
R12	RRP-96-306	RRP-96-307	N/A	N/A	N/A	GPA-96-314
R18	RRP-96-656	RRP-96-657	RRP-96-658	RRP-96-671	RRP-96-675	RRP-96-673
R19	RRP-96-760	RRP-96-761	RRP-96-658	RRP-96-671	RRP-96-675	RRP-96-673
R28	RRP-96-682	RRP-96-683	RRP-96-684	RRP-96-672	RRP-96-676	RRP-96-674
R28A	RRP-96-986	RRP-96-987	RRP-96-049	RRP-96-672	RRP-96-676	RRP-96-674
Model	Main Regulating Spring 0-30 PSIG	Main Regulating Spring 0-60 PSIG	Main Regulating Spring 0-125 PSIG	Main Regulating Spring 0-250 PSIG		
Regulators						
R08, R09	GRP-95-111	GRP-96-718	GRP-96-717	N/A		
R12	RRP-96-303	RRP-96-302	RRP-96-301	N/A		
R18, R19	RRP-96-659	RRP-96-660	RRP-96-661	RRP-96-662		
R28, R28A	RRP-96-163	RRP-96-164	RRP-96-165	RRP-96-166		
R39	N/A	C10A1304	CA101308	CA101317		

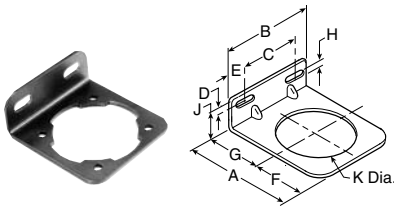
Accessories – Lubricators



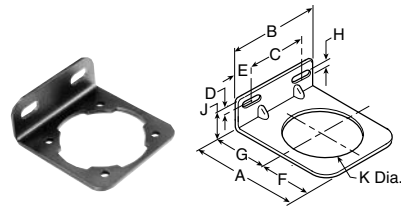
C-Bracket
GPA-97-010



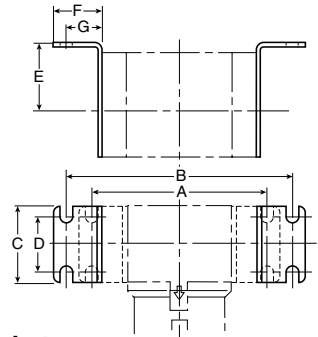
Wall Bracket
GPA-96-300



L-Bracket
GPA-96-604



L-Bracket
GPA-96-605



L-Bracket
P3NKA00MW

Dimensions Inches (mm)

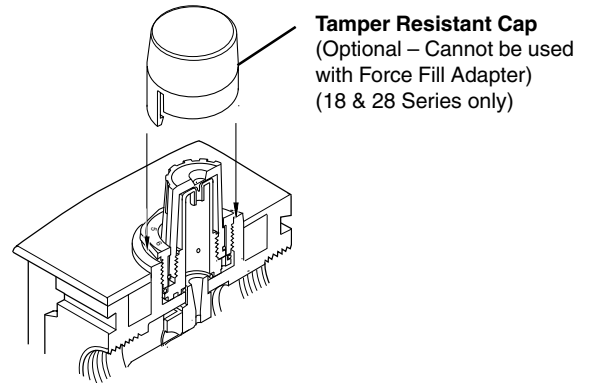
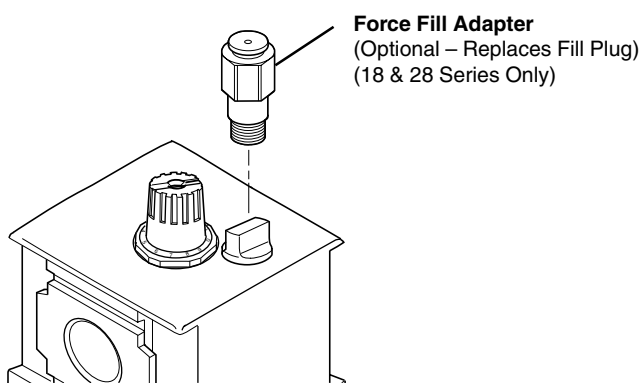
Accessories	Part Number	Used On	A	B	C	D	E	F	G	H	J	K	L
C-Bracket	GPA-97-010	L08	2.67 (68)	1.73 (44)	1.57 (40)	.07 (1.8)	.39 (9.9)	1.57 (40)	.78 (20)	2.32 (59)	1.37 (35)	2.41 (61)	.26 (6.6)
Wall Bracket	GPA-96-300	L12	.28 (7)	2.12 (54)	2.00 (51)	.14 (4)	1.85 (47)	.63 (16)	.28 (7)	—	—	—	—
L-Bracket	GPA-96-604	L18	2.84 (72)	2.74 (69.5)	1.66 (42)	.38 (9.6)	.54 (14)	.88 (22)	1.57 (40)	.28 (7.1)	1.10 (28)	2.25 (57)	—
L-Bracket	GPA-96-605	L28	3.44 (87)	3.00 (76)	1.88 (48)	.38 (9.6)	.56 (14)	1.10 (28)	1.94 (49)	.28 (7.1)	1.10 (28)	2.66 (67.5)	—
L-Bracket	P3NKA00MW	L39	6.22 (158)	8.19 (208)	2.75 (70)	1.97 (50)	2.36 (60)	1.77 (45)	1.30 (33)	—	—	—	—

Lubricator Replacement Kits

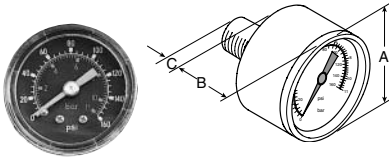
 = "Most Popular"



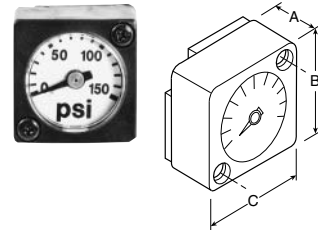
Model	Plastic Bowl / Bowl Guard / Manual Drain	Manual Drain	Metal Bowl / Sight Gauge / Manual Drain	Tamper Resistant Cap	
Lubricators					
L08	LRP-96-736	N/A	GRP-96-714*	LRP-96-680	
L12	GRP-96-308** w/ GRP-96-345	N/A	GRP-96-306	N/A	
L18	LRP-96-701	GRP-96-685	GRP-96-636	LRP-96-680	
L28	LRP-96-702	GRP-96-685	GRP-96-644	LRP-96-680	
L39	N/A	PS512	P3NKA00BSM	N/A	
*Metal bowl does not have sight gauge. ** No Drain.					
Model	Siphon Tube Assembly	Bowl O-ring (Nitrile)	Bowl O-ring (Fluorocarbon)	Force Fill Adapter	Fill Plug Kit (Fill Plug & O-ring)
Lubricators					
L08	LRP-96-731	GRP-96-710	GRP-96-711	N/A	LRP-96-730
L12	N/A	N/A	N/A	LRP-96-302	N/A
L18	LRP-96-677	GRP-96-640	GRP-96-754	LRP-96-704	LRP-96-679
L28	LRP-96-781	GRP-96-654	GRP-96-755	LRP-96-704	LRP-96-679
L39	N/A	N/A	N/A	P3NKA00PK	P3NKA00PL
Model	Flow Guide	Bypass Assembly	Sight Dome Assembly		
Lubricators					
L08	N/A	N/A	LRP-96-301		
L18	N/A	GRP-96-678	LRP-96-710		
L28	N/A	GRP-96-678	LRP-96-710		
L39	N/A	N/A	PS740		



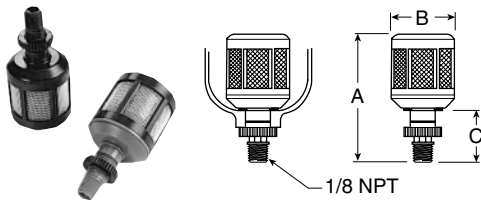
Accessories – Filter / Regulators



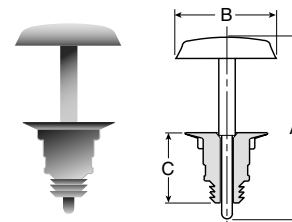
Gauge 18 / 28 Series



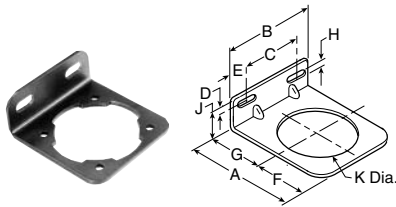
**Flush Mount Gauge
08 Series**



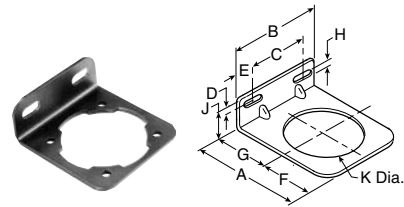
**Automatic Mechanical Drain
GRP-95-973, -981, GRP-96-200, -300**



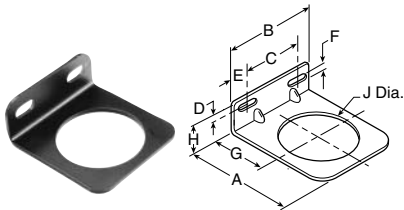
**Automatic Piston Drain
GRP-96-716**



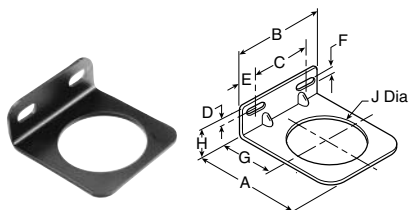
**L-Bracket
GPA-96-604**



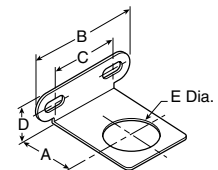
**L-Bracket
GPA-96-605**



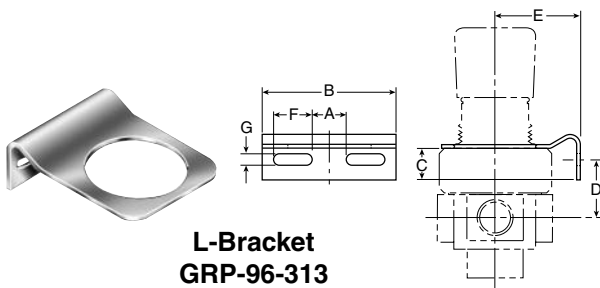
L-Bracket GRP-96-606



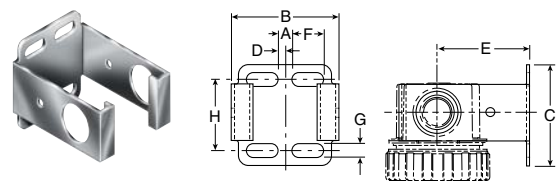
L-Bracket GRP-96-607



L-Bracket GRP-96-739

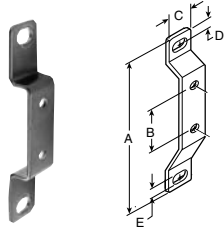


**L-Bracket
GRP-96-313**

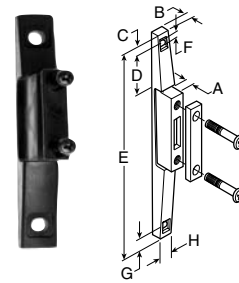


**Wall Bracket
GPA-96-300**

Accessories – Filter / Regulators



T-Bracket GPA-96-602



**T-Bracket
GPA-96-737
w/ Joiner**

Dimensions Inches (mm)

Accessories	Part Number	Used On	A	B	C	D	E	F	G	H	J	K	L
L-Bracket	GRP-96-739	B08	1.57 (40)	2.68 (68)	1.74 (44)	.97 (25)	1.19 (30)	—	—	—	—	—	—
	GRP-96-313	R12	.84 (21)	2.59 (66)	.49 (12)	1.02 (26)	1.85 (47)	.61 (15)	.28 (7)	1.41 (36)	—	—	—
	GPA-96-606	B18	2.74 (69.5)	2.74 (69.5)	1.66 (42)	.43 (11)	.54 (14)	.28 (7.1)	1.57 (40)	1.00 (25)	2.0 (51)	—	—
	GPA-96-607	B28	3.33 (84.5)	3.00 (76)	1.88 (48)	.43 (11)	.56 (14)	287.1 (61)	1.94 (49)	1.00 (25)	2.40 (61)	—	—
C-Bracket	GPA-97-010	B08	2.67 (68)	1.73 (44)	1.57 (40)	.07 (1.8)	.39 (9.9)	1.57 (40)	.78 (20)	2.32 (59)	1.37 (35)	2.41 (61)	.26 (6.6)
	GPA-96-604	B18	2.84 (72)	2.74 (69.5)	1.66 (42)	.38 (9.6)	.54 (14)	.88 (22)	1.57 (40)	.28 (7.1)	1.10 (28)	2.25 (57)	—
	GPA-96-605	B28	3.44 (87)	3.00 (76)	1.88 (48)	.38 (9.6)	.56 (14)	1.10 (28)	1.94 (49)	.28 (7.1)	1.10 (28)	2.66 (67.5)	—
T-Bracket	GPA-96-602	B08	3.75 (95)	1.25 (32)	.76 (19.3)	.25 (6.3)	.28 (7.1)	—	—	—	—	—	—
T-Bracket w/ Joiner	GPA-96-737	B18, B28	.45 (11)	.28 (7.1)	.40 (10)	.67 (17)	3.97 (100.8)	.22 (5.6)	.40 (10)	.64 (16)	—	—	—
Wall Bracket	GPA-96-300	B12	.28 (7)	2.12 (54)	2.00 (51)	.14 (4)	1.85 (47)	.63 (16)	.28 (7)	—	—	—	—
Automatic Mechanical Drains													
Nitrile 1/8 NPT	GRP-95-973	B18, B28											
Fluorocarbon 1/8 NPT	GRP-95-981	B18, B28	2.93 (74.4)	1.47 (37.3)	1.17 (29.7)	—	—	—	—	—	—	—	—
Nitrile 1/8 BSP, R1/8	GRP-96-200	B18, B28											
Fluorocarbon 1/8 BSP, R1/8	GRP-96-300	B18, B28											
Automatic Piston Drain	GRP-96-716	B08	1.70 (43)	.94 (24)	.68 (17)	—	—	—	—	—	—	—	—
Gauge													
(0 to 150 PSIG)	GRP-96-719	B08											
(0 to 60 PSIG)	GRP-96-720	B08	.59 (15)	1.06 (27)	1.06 (27)	—	—	—	—	—	—	—	—
(0 to 30 PSIG)	GRP-96-721	B08											
(0 to 11 bar)	GRP-96-722	B08											
(0 to 4 bar)	GRP-96-723	B08											
(0 to 2 PSIG)	RRP-96-724	B08, B28											
(0 to 60 PSIG)	RRP-96-664	B12, B18, B28											
(0 to 160 PSIG)	RRP-96-665	B12, B18, B28											
(0 to 300 PSIG)	RRP-96-666	B12, B18, B28	1.59 (40)	.96 (24)	.88 (22)	—	—	—	—	—	—	—	—
(0 to 2,0 bar)	RRP-96-667	B12, B18, B28											
(0 to 4 bar)	RRP-96-668	B18, B28											
(0 to 11 bar)	RRP-96-669	B18, B28											
(0 to 20 bar)	RRP-96-670	B18, B28											

Filter / Regulator Replacement Repair Kits

 = "Most Popular"



Model	Plastic Bowl / Bowl Guard Manual Drain	Metal Bowl / Sight Gauge Manual Drain	Plastic Bowl / Bowl Guard Automatic Drain	Metal Bowl / Sight Gauge Automatic Drain	Plastic Bowl / Bowl Guard No Drain
B08	GRP-96-712	GRP-96-714*	N/A	N/A	N/A
B12	GRP-96-347 w/ GRP-96-345	GRP-96-349	GRP-96-351** w/ GRP-96-345	GRP-96-352**	N/A
B18	GRP-96-634	GRP-96-636	GRP-96-635	GRP-96-637	GRP-96-638
B28, B28A	GRP-96-642	GRP-96-644	GRP-96-643	GRP-96-645	GRP-96-652
B39	N/A	P3NKA00BSM	N/A	P3NKA00BSA	N/A

* Metal bowl does not have sight gauge.
 ** 12 Series has Piston Style Drain.

Model	Filter Element 5 Micron	Bowl O-ring (Nitrile)	Bowl O-ring (Fluorocarbon)	Filter Retainer Element Baffle	Manual Drain
B08	FRP-96-729	GRP-96-710	GRP-96-711	N/A	N/A
B18	FRP-96-639	GRP-96-640	GRP-96-754	FRP-96-641	GRP-96-685
B28, B28A	FRP-96-653	GRP-96-654	GRP-96-755	FRP-96-283	GRP-96-685
B39	P3NKA00ESE	N/A	N/A	N/A	PS512

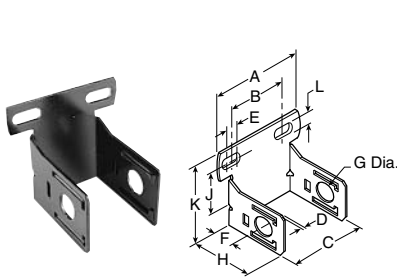
Model	Self-relieving Diaphragm (Nitrile)	Non-relieving Diaphragm (Nitrile)	Valve Assembly Kit	Valve Spring
B08	GRP-96-725	GRP-96-726	RRP-96-727	RRP-96-728
B18	RRP-96-656	RRP-96-657	RRP-96-658	N/A
B28	RRP-96-682	RRP-96-683	RRP-96-684	N/A
B28A	RRP-96-986	RRP-96-987	RRP-96-049	N/A

Model	Main Regulating Spring 0-30 PSIG	Main Regulating Spring 0-60 PSIG	Main Regulating Spring 0-125 PSIG	Main Regulating Spring 0-250 PSIG
B08	GRP-95-111	GRP-96-718	GRP-96-717	N/A
B12	RRP-96-303	RRR-96-302	RRP-96-301	RRP-96-304 (200 PSIG)
B18	RRP-96-659	RRP-96-660	RRP-96-661	RRP-96-662
B28, B28A	RRP-96-163	RRP-96-164	RRP-96-165	RRP-96-166
B39	N/A	C10A1304	CA101308	CA101317

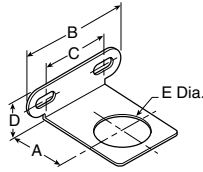
Tamper Model	Aluminum Resistant Ring	Plastic Panel Nut	Manual Panel Nut	Override Drain
B08	RPA-95-735	RPA-96-733	RPA-96-734	N/A
B12	N/A	N/A	GPA-96-314	N/A
B18	RRP-96-671	RRP-96-673	RRP-96-675	GRP-96-000
B28, B28A	RRP-96-672	RRP-96-674	RRP-96-676	GRP-96-000

Accessories – “08” Series

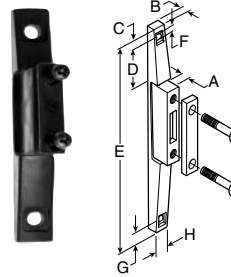
 = “Most Popular”



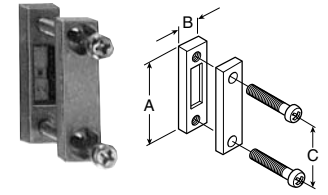
C-Bracket
GPA-97-010



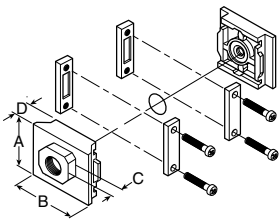
L-Bracket
GRP-96-739



T-Bracket
GPA-96-737
w/ Joiner



Joiner Set
GPA-96-738
(O-ring not shown)



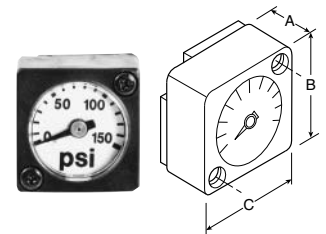
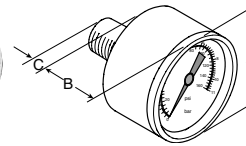
End Block Set



End Block Set
w/ T-Bracket



Gauge with 1/8 Port
08 Series



Flush Mount Gauge
08 Series

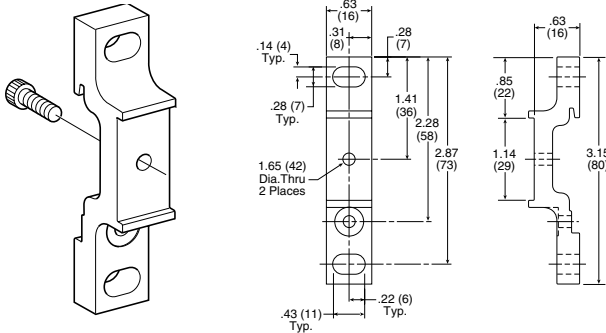
Dimensions Inches (mm)

Accessories	Pipe Size	Part Number	A	B	C	D	E	F	G	H	J	K
C-Bracket		GPA-97-010	2.67 (68)	1.73 (44)	1.57 (40)	.07 (1.8)	.39 (9.9)	1.57 (40)	.78 (20)	2.32 (59)	1.37 (35)	2.41 (61)
L-Bracket		GRP-96-739	1.57 (40)	2.68 (68)	1.74 (44)	.97 (25)	1.19 (30)	—	—	—	—	—
T-Bracket		GPA-96-737	.45 (11)	.28 (7.1)	.40 (10)	.67 (17)	3.97 (100.8)	.22 (5.6)	.40 (10)	.64 (16)	—	—
Joiner Set		GPA-96-738	1.42 (36)	.39 (9.9)	.98 (26)	—	—	—	—	—	—	—
End Block Set	1/8 NPT	GPA-97-018	1.42 (36)	1.57 (40)	.53 (13.5)	.31 (8)	—	—	—	—	—	—
	1/4 NPT	GPA-97-019										
	3/8 NPT	GPA-97-020										
	G 1/8	GPA-97-066										
	G 1/4	GPA-97-067										
G 3/8	GPA-97-065											
End Block Set With T-Brackets	1/8 NPT	GPA-97-025	1.42 (36)	1.57 (40)	.53 (13.5)	.31 (8)	—	—	—	—	—	—
	1/4 NPT	GPA-97-026										
	3/8 NPT	GPA-97-027										
	G 1/8	GPA-97-068										
	G 1/4	GPA-97-069										
G 3/8	GPA-97-070											
Flush Mount Gauge (0 to 150 PSIG) (0 to 60 PSIG) (0 to 11 bar) (0 to 4 bar) (0 to 2 bar)		GRP-96-719	.59 (15)	1.06 (27)	1.06 (27)	—	—	—	—	—	—	—
		GRP-96-720										
		GRP-96-722										
		GRP-96-723										
		GRP-96-724										
08 Series Gauge 0 to 160 PSIG (0 to 11 bar) 0 to 60 PSIG (0 to 4 bar)	1/8 CBM	GRP-95-227	1.59 (40)	.98 (24)	.88 (22)	—	—	—	—	—	—	—
		GRP-95-228										

Accessories – “12” Series

 = “Most Popular”

Wall Mounting Kits GPA-96-311

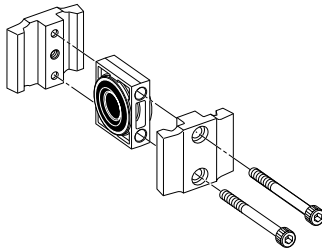


Wall Mounting Kits are available for mounting your Modular Assemblies and can be assembled and used with any standard body connector set.

Since Modular Combinations are always identical in size, you can predrill for wall mounting on your equipment.

Kit includes 1 assembly.

Body Connectors GPA-96-310



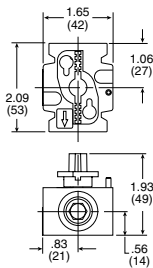
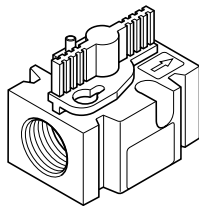
Body Connectors allow you to easily assemble and disassemble Modular Combinations.

Body Connectors are required whenever you assemble two or more pieces together.

Each Kit includes one set.

Lockout Valve

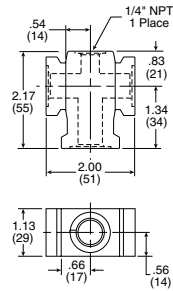
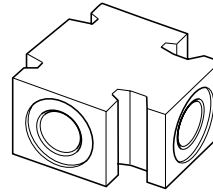
V12-02-0000 (1/4" Port)
V12-03-000 (3/8" Port)



Lockout Valves provide positive shut-off and exhaust capability to isolate Modular units so they can be easily removed from the line and can be locked in a closed position. Accepts #3 padlock.

NOTE: Body Connectors are not supplied with Lockout Valves.

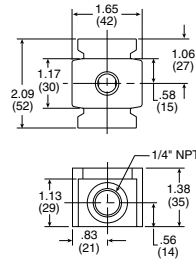
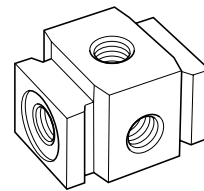
3-Way Modular Block N12-02-T000



3-Way Modular Block allows for 90° installation for flexibility or for common port regulation

Modular Manifold Block N12-02-0000

1/4" Port

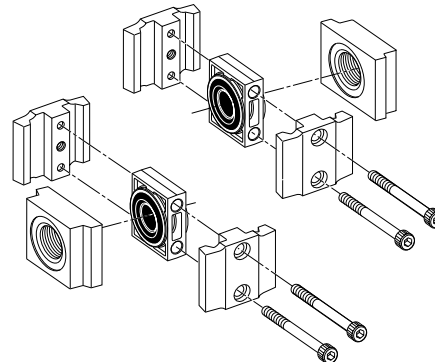


A Modular Manifold Block can be used between any two Modular units to give additional outlet ports. The 1/4" Manifold Block provides three additional outlets. Any standard pipe plug can be used to close off unused ports.

NOTE: Body Connectors are not supplied with Manifold Blocks.

Port Block Connector Kits

	1/8"	1/4"	3/8"
NPT	GPA-96-301	GPA-96-302	GPA-96-303
BSPP	GPA-96-304	GPA-96-305	GPA-96-306
BSPT	GPA-96-307	GPA-96-308	GPA-96-309

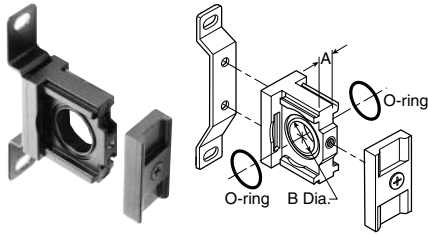


Port Block Connectors allow you to make threaded port connections to Modular units and are available in various port sizes to match your system requirements.

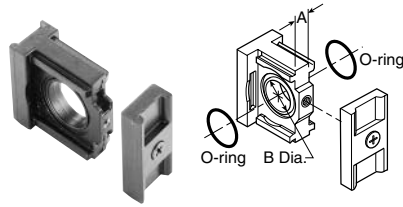
Each Kit includes all the necessary pieces to make two port connections.

Accessories – “18 / 28” Series

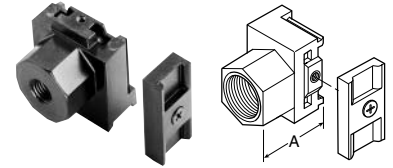
 = “Most Popular”



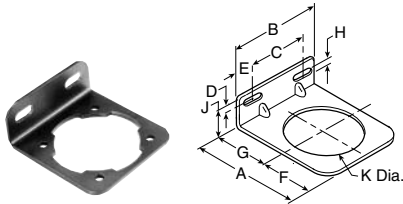
T-Bracket w/ Joiner Set GPA-96-603



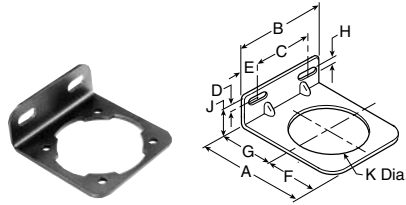
Joiner Set GPA-96-601



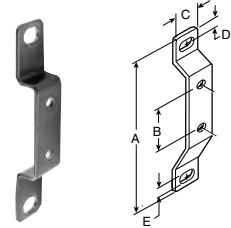
End Block



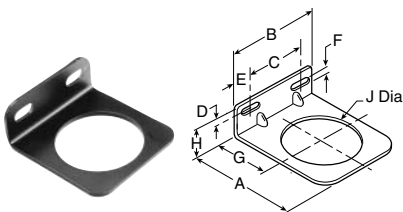
L-Bracket GPA-96-604



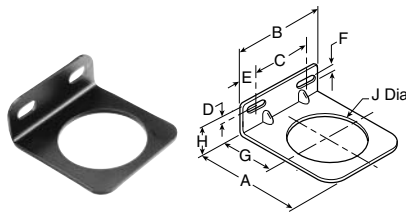
L-Bracket GPA-96-605



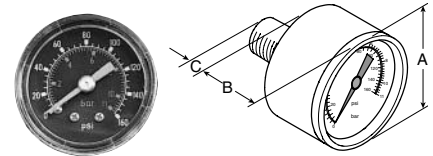
T-Bracket GPA-96-602



L-Bracket GRP-96-606



L-Bracket GRP-96-607



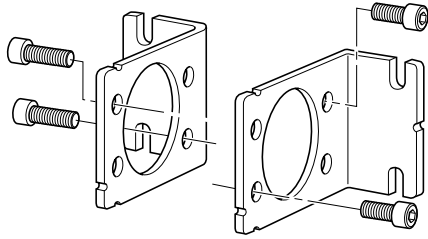
Gauge 18 / 28 Series

Dimensions Inches (mm)

Accessories	Pipe Size	Part Number	A	B	C	D	E	F	G	H	J	K
T-Bracket		GPA-96-602	3.75 (95)	1.25 (32)	.76 (19.3)	.25 (6.3)	.28 (7.1)	—	—	—	—	—
T-Bracket w/ Joiner Set		GPA-96-603	.35 (8.9)	.87 (22.1)	—	—	—	—	—	—	—	—
L-Bracket, 18 Series		GPA-96-604	2.84 (72)	2.74 (69.5)	1.66 (42)	.38 (9.6)	.54 (14)	.88 (22)	1.57 (40)	.28 (7.1)	1.10 (28)	2.25 (57)
L-Bracket, 28 Series		GPA-96-605	3.44 (87)	3.00 (76)	1.88 (48)	.38 (9.6)	.56 (14)	1.10 (28)	1.94 (49)	.28 (7.1)	1.10 (28)	2.66 (67.5)
L-Bracket, 18 Series		GPA-96-606	2.74 (69.5)	2.74 (69.5)	1.66 (42)	.43 (11)	.54 (14)	.28 (7.1)	1.57 (40)	1.00 (25)	2.0 (51)	—
L-Bracket, 28 Series		GPA-96-607	3.33 (84.5)	3.00 (76)	1.88 (48)	.43 (11)	.56 (14)	.287.1 (61)	1.94 (49)	1.00 (25)	2.40 (61)	—
Joiner Set		GPA-96-601	.35 (8.9)	.87 (22.1)	—	—	—	—	—	—	—	—
End Block	1/4 NPT	GPA-96-610	1.59 (40)	—	—	—	—	—	—	—	—	—
	3/8 NPT	GPA-96-611										
	1/2 NPT	GPA-96-612										
	3/4 NPT	GPA-96-613										
	G 1/4	GPA-96-620										
	G 3/8	GPA-96-621										
	G 1/2	GPA-96-622										
G 3/4	GPA-96-623											
Gauge	(0 to 30 PSIG)	RRP-96-663	1.59 (40)	.96 (24)	.88 (22)	—	—	—	—	—	—	—
	(0 to 60 PSIG)	RRP-96-664										
	(0 to 160 PSIG)	RRP-96-665										
	(0 to 300 PSIG)	RRP-96-666										
	(0 to 2,0 bar)	RRP-96-667										
	(0 to 4,1 bar)	RRP-96-668										
	(0 to 11 bar)	RRP-96-669										
(0 to 20 bar)	RRP-96-670											

Accessories – “39” Series

Mounting Brackets P3NKA00MW

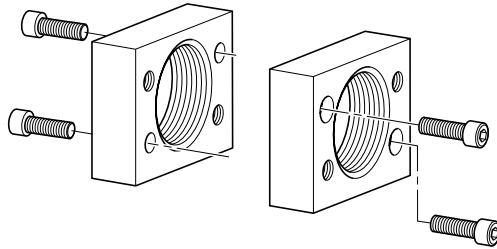


For 1-1/2" BSPP Port Block with E02 fitting application, use
Mounting Bracket Kit P3NKA00BMW

Port Block Kits

Individual Units:	3/4"	1"
NPT	P3NKB96CP	P3NKB98CP
BSPP	P3NKB16CP	P3NKB18CP

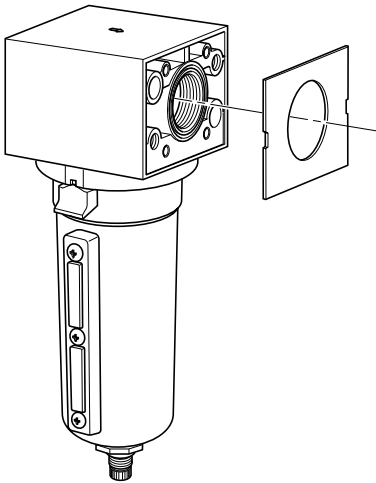
Modular Combinations:	3/4"	1"
NPT	P3NKB96CL	P3NKB98CL
BSPP	P3NKB16CL	P3NKB18CL



Port Block Kits allow units to be installed or removed as modular components.

Each Kit includes all the necessary pieces to make two port connections.

Replacement Body Covers P3NKA00PM



Each Kit contains two covers.
All units are shipped with body covers.