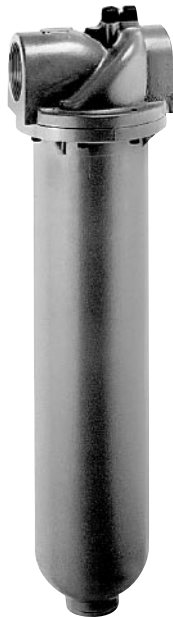
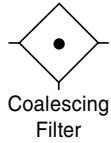


# Coalescing Filter

## M36

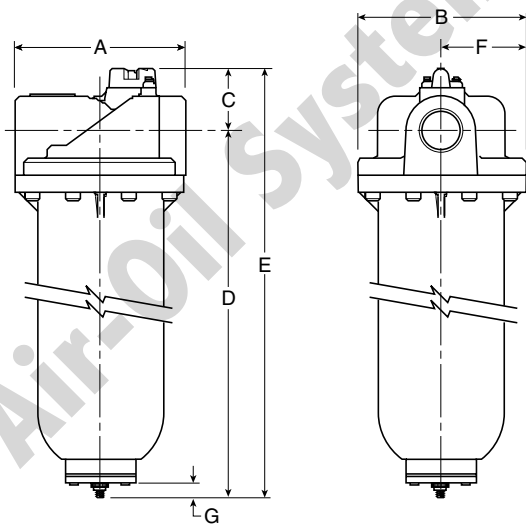
= "Most Popular"



**M36-0C-000**

### Features

- Heavy-duty Cast Aluminum Housings to Withstand Operating Pressures Up to 300 PSIG ††
- Differential Pressure Indicator to Eliminate the Guesswork of Element Replacement
- Unique Drain Mounting Plate Design Offers Trouble-free Method for Interchanging and Installing External Drains
- High-flow Filter Elements: Coalescing, 1 Micron and 0.01 Micron



### Specifications

|                         |                             |   |
|-------------------------|-----------------------------|---|
| Flow Capacity *         | 2                           | 950 SCFM (450 dm <sup>3</sup> /s)             |
| Maximum Supply Pressure | without DP2<br>with DP2     | 300 PSIG (20,7 bar) ††<br>150 PSIG (10.3 bar) |
| Operating Temperature   | 32° to 150°F (0° to 65.5°C) |   |
| Port Size               | NPT / BSPP-G                | 2   |
| Standard Filtration     | Micron                      | (B1) 1.0, (C) 0.01<br>(D) 0.003 ppm / wt **   |
| Useful Retention †      | oz. (cm <sup>3</sup> )      | 13.9 (411)                                    |
| Weight                  | lb. (kg)                    | 23.2 (10.1)                                   |

\* Inlet pressure 150 PSIG (10.3 bar). Pressure drop of 3 PSID (0.2 bar).

\*\* Filtration temperature of 70°F (21°C) @ 100 PSIG (6.9 bar) with typical compressor lubricating oil and protected by Type "C" filter.

† Useful retention refers to volume below the quiet zone baffle.

†† Without Differential Pressure Indicator – Max. supply pressure is 300 PSIG (20.7 bar).

**"M" Series Coalescing Filters, with Type "B1" 1.0 micron elements:** All Wilkerson Type "M" Oil Removal (Coalescing) Filters with Type "B1" 1.0 micron elements **exceed ISO Class 2** for maximum particle size and concentration of solid contaminants, and exceed Class 3 on maximum oil content (ppm/wt).

**"M" Series Coalescing Filters, with Type "C" 0.01 micron elements:** All Wilkerson Type "M" Oil Removal (Coalescing) Filters with Type "C" 0.01 micron elements **exceed ISO Class 1** for maximum particle size and concentration of solid contaminants, and exceed Class 1 on maximum oil content (ppm/wt).

**"M" Series Adsorption Filters, with Type "D" activated carbon elements:** All Wilkerson Type "M" adsorption filters with Type "D" activated carbon elements **exceed ISO Class 1** on maximum oil content (ppm/wt).

### Materials of Construction

|                 |                            |  |
|-----------------|----------------------------|--|
| Body            | Aluminum                   |  |
| Bowls           | Aluminum                   |  |
| Stud            | Plated Steel               |  |
| Filter Elements | Type "B1", "C"<br>Type "D" | Borosilicate Cloth<br>Activated Carbon |
| Seals           | Fluorocarbon               |  |

**NOTE:** Standard filter includes tapped 1/2 NPT / BSPP-G drain plate. To order internal float drain shown, order drain adapter plate GRP-95-391 and automatic drain GRP-95-981.

### Dimensions

| Models                      | Inches (mm) | A             | B             | C            | D                | E              | F            | G           |
|-----------------------------|-------------|---------------|---------------|--------------|------------------|----------------|--------------|-------------|
| Standard Unit<br>M36-0C-000 |             | 7.80<br>(198) | 7.75<br>(197) | 2.83<br>(72) | 19.51<br>(495.5) | 22.34<br>(567) | 3.88<br>(99) | .55<br>(14) |

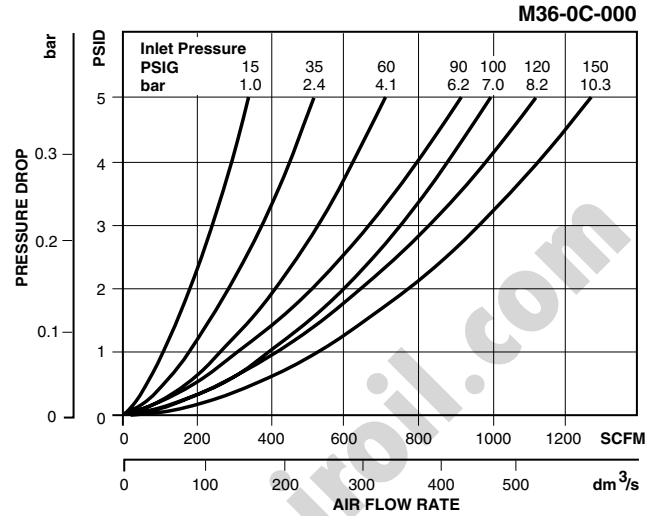
= "Most Popular"

### Replacement Element Kits

- Type "B1", 1.0 Micron ..... MSP-95-503
- Type "C", 0.01 Micron..... MTP-95-503
- Type "D", Oil Vapor Removing ..... MXP-95-503

### Accessories

- Cap, Differential Pressure Indicator  
(For pressures over 150 PSIG) ..... GRP-95-022
- Drain, Automatic, Internal, Fluorocarbon..... GRP-95-981
- Drain Plate Kit –
  - .56 Dia. (Use with Internal Auto Float Drain)..... GRP-95-391
  - 1/4 NPT Tapped Drain Port..... GRP-95-392
  - 1/2 NPT Tapped Drain Port..... GRP-95-393
- Gauge, Differential Pressure ..... DP3-01-000
- Indicator, Differential Pressure ..... DP2-01-001



Air-Oil Systems, Inc. www.air-oil.com

E

### Ordering Information

| Model Type | Port Size | Metal Bowl / "C" Element | Metal Bowl / "B1" Element | Metal Bowl / "D" Element                              |
|------------|-----------|--------------------------|---------------------------|---|
| <b>M36</b> | 2         | M36-0C-000               | M36-0C-S00                | M36-0C-X00<br>(Includes 1/2 NPT / BSPP-G Drain Plate) |

Options - To order an option supplied with the unit model, add the appropriate coded suffix letter in the designated position of the model number.