

NEW!

IAI  
Quality and Innovation

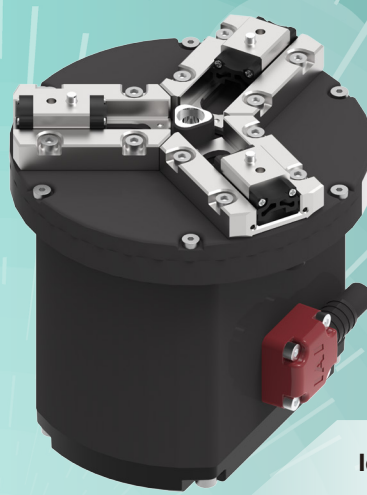
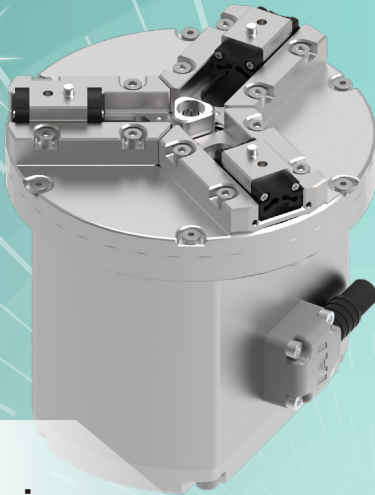
# Mini 3-Finger Gripper

DISTRIBUTED BY:

**Air-Oil Systems, Inc.**

AUTOMATION SOLUTIONS

753 WAMBOLD ROAD SOUDERTON, PA 18964-2715  
215.721.9595 800.333.5520 FAX 215.721.7666  
www.airoil.com



Built-in controller

ROBO CYLINDER

RCP6-GRTR9

EC ELECYLINDER

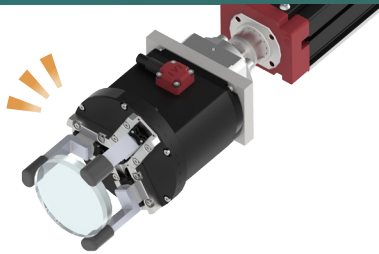
EC-GRTR9

No tool changing!  
Multi-point positioning

Ideal for replacing air cylinders  
2-point positioning

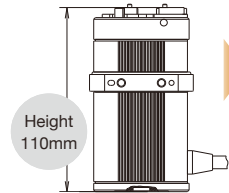
## Easy mounting on the tool tip due to its compact size!

Expands applications such as inspection and centering processes of workpieces.

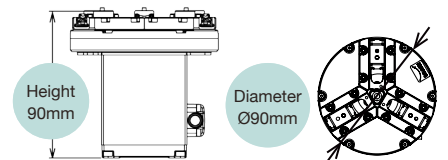


[Application Example] Inspection equipment for camera lenses

Previous model (RCP2-GR3SS)



NEW! EC-GRTR9 / RCP6-GRTR9



## High gripping force and long stroke!

Maximum gripping force

**70N**

Stroke (both sides)

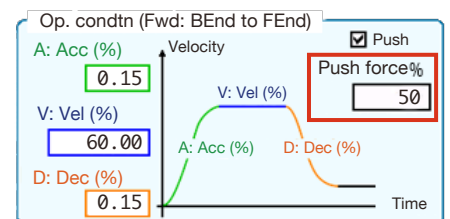
**30mm**

Three times larger than the previous model\*

\*RCP2-GR3SS

## Electric operation allows for easy fine-tuning of speed and gripping force

Gripping force can be set in **percentage increments**. Precise adjustments to specific values enable handling of workpiece deformation.



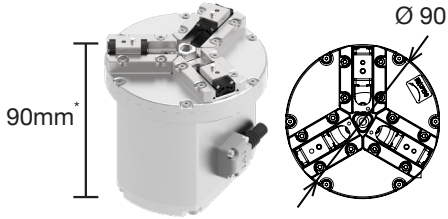
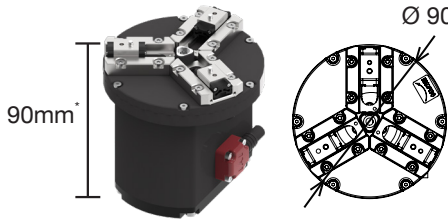
**Product Specifications**

**ROBO CYLINDER**

① **RCP6** - ② **GRTR9** - ③ **WA** - ④ **35P** - ⑤ **7.5** - ⑥ **30** - [ ⑦ ] - [ ⑧ ] - ( [ ] )  
 Series                      Type                      Encoder                      Motor type                      Reduction ratio                      Stroke                      Applicable controller                      Cable length                      Options

**ELECYLINDER**

① **EC** - ② **GRTR9** - ⑤ **M** - ⑥ **30** - [ ⑨ ] - [ ⑩ ] - ( [ ] )  
 Series                      Type                      Reduction ratio                      Stroke                      Actuator cable length                      Power-I/O cable length                      Options

External appearance (Models without brake)		
	*Distance between the bottom surface and finger mounting surface	*Distance between the bottom surface and finger mounting surface
① Series	RCP6	EC
② Type	GRTR9	
③ Encoder	Battery-less absolute encoder	Incremental battery-less absolute encoder (optional)
④ Motor type	Stepper motor ( <input type="checkbox"/> 35 )	
⑤ Reduction ratio	7.5 (equivalent to 7.5mm lead)	M (equivalent to 7.5mm lead)
⑥ Stroke (mm)	30 (15 per finger)	
⑦ Applicable controller	P3: PCON MSEL    P5: RCON RSEL	-
⑧ Cable length	N: None, P: 1m, S: 3m, M: 5m X□□: Specified length, R□□: Robot cable	-
⑨ Actuator cable length (m)	(can be changed by option)	1 to 10 (in one meter increments) *Select so that the total length of the actuator cable and power-I/O cable is 10m or less.
⑩ Power-I/O cable length (m)	-	0 (No cable) / 1 to 9, S1 to S9 *4-way connector specification if prefixed by "S" before number. *Select so that the total length of the actuator cable and power-I/O cable is 10m or less.
Max. gripping force (N) *Total of 3 fingers	70	
Max. speed (mm/s) at gripping operations *per finger	20	
Max. speed (mm/s) *per finger	85	
Min. speed (mm/s) *per finger	9.4	
Static allowable moment (N·m) *per finger	Ma:1.97/Mb2.81/Mc5.32	
Allowable load for vertical direction (N)	88.7	

**DISTRIBUTED BY:**



**Air-Oil Systems, Inc.**

AUTOMATION SOLUTIONS

753 WAMBOLD ROAD SOUDERTON, PA 18964-2715  
 215.721.9595 800.333.5520 FAX 215.721.7666

www.airoil.com